

WHITEHALL CENTRAL SCHOOL DISTRICT
PO Box 29, 87 Buckley Road, Whitehall, New York 12887-3633
Whitehall – Birthplace of the U. S. Navy – www.railroaders.net

Ethan Burgess
Jr-Sr High School Principal
518 499-1770
eburgess@railroaders.net

Patrick M. Dee
Superintendent of Schools
518 499-1772
pdee@railroaders.net

Judy Gould
Elementary School Principal
518 499-0330
jgould@railroaders.net

Julie Umar
Director of Special Education
518 499-1771
jumar@railroaders.net

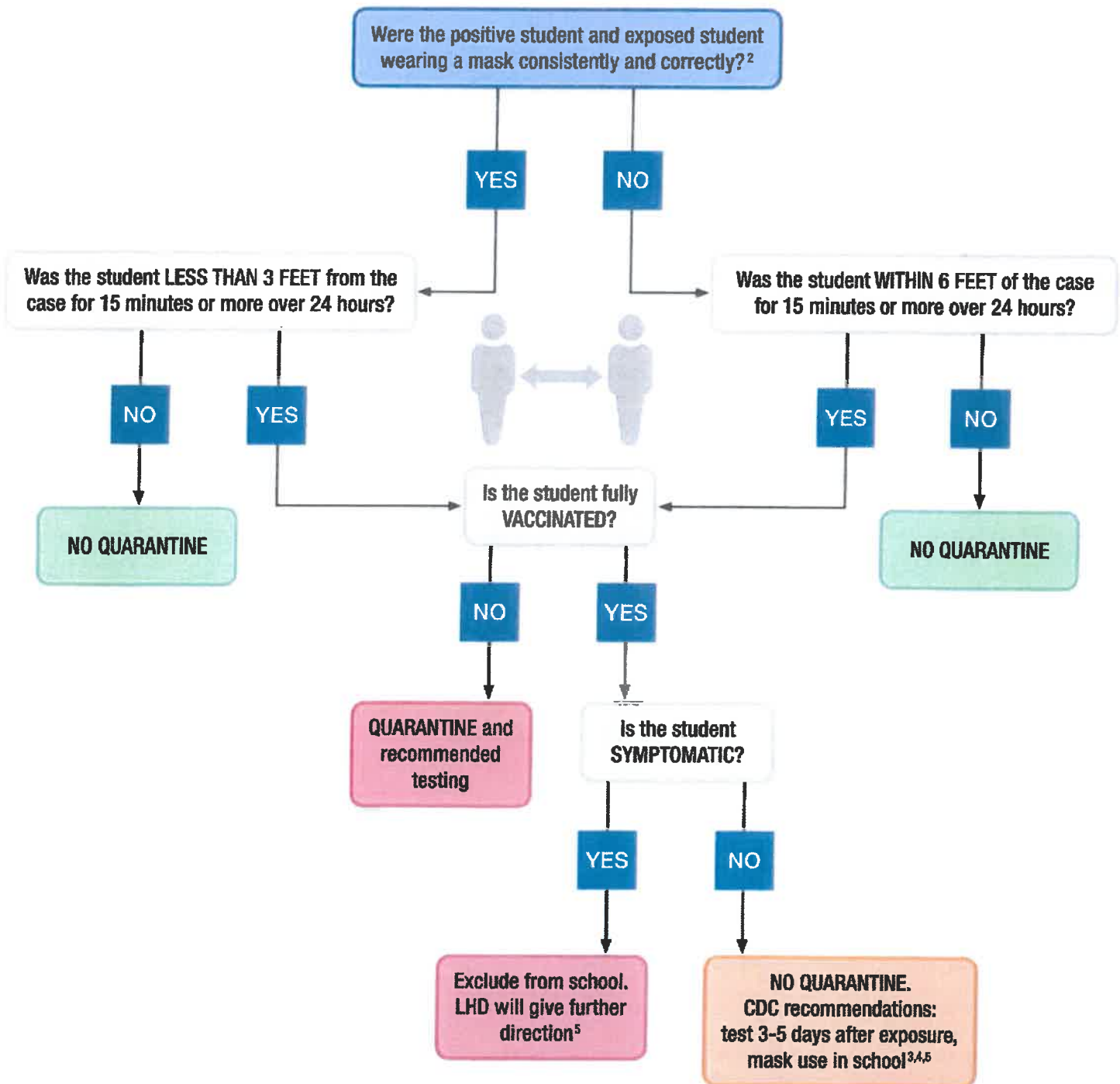
Kate DuBois
School Business Manager
518 499-0346
kdubois@railroaders.net

In an effort to share the procedures that school districts are following relating to the COVID pandemic, below you will find numerous links to the requirements that have been set forth for New York State School Districts.

First and foremost, it is important to share that **school districts do not quarantine students, nor do school districts have the authority to remove students from quarantine.** These actions are taken by the County or State Health Departments. School districts are required to provide names of “close contacts” to the DOH based upon “Contact Tracing Algorithms” that you see below. Contact tracers from the DOH then reach out to families to determine which students must be quarantined. (It is IMPERATIVE that families answer calls from NYS Contact Tracing). If your children are immunized, it is important to share that information with the contact tracers as this will often keep the students from being quarantined.

Please be aware, there is often a delay between an exposure and notification by a contact tracer due to the timeline between an individual falling ill, being tested, having their results uploaded into the State Portal by the testing agency and ultimately a request to the school district from the State of County agency for a contact list. The county and state contact tracers are presently overwhelmed with positives in the region which is further slowing the process. This is why it is IMPERATIVE that parents keep children home who are displaying symptoms and have them tested as soon as possible.

Student Case/Student Contacts¹

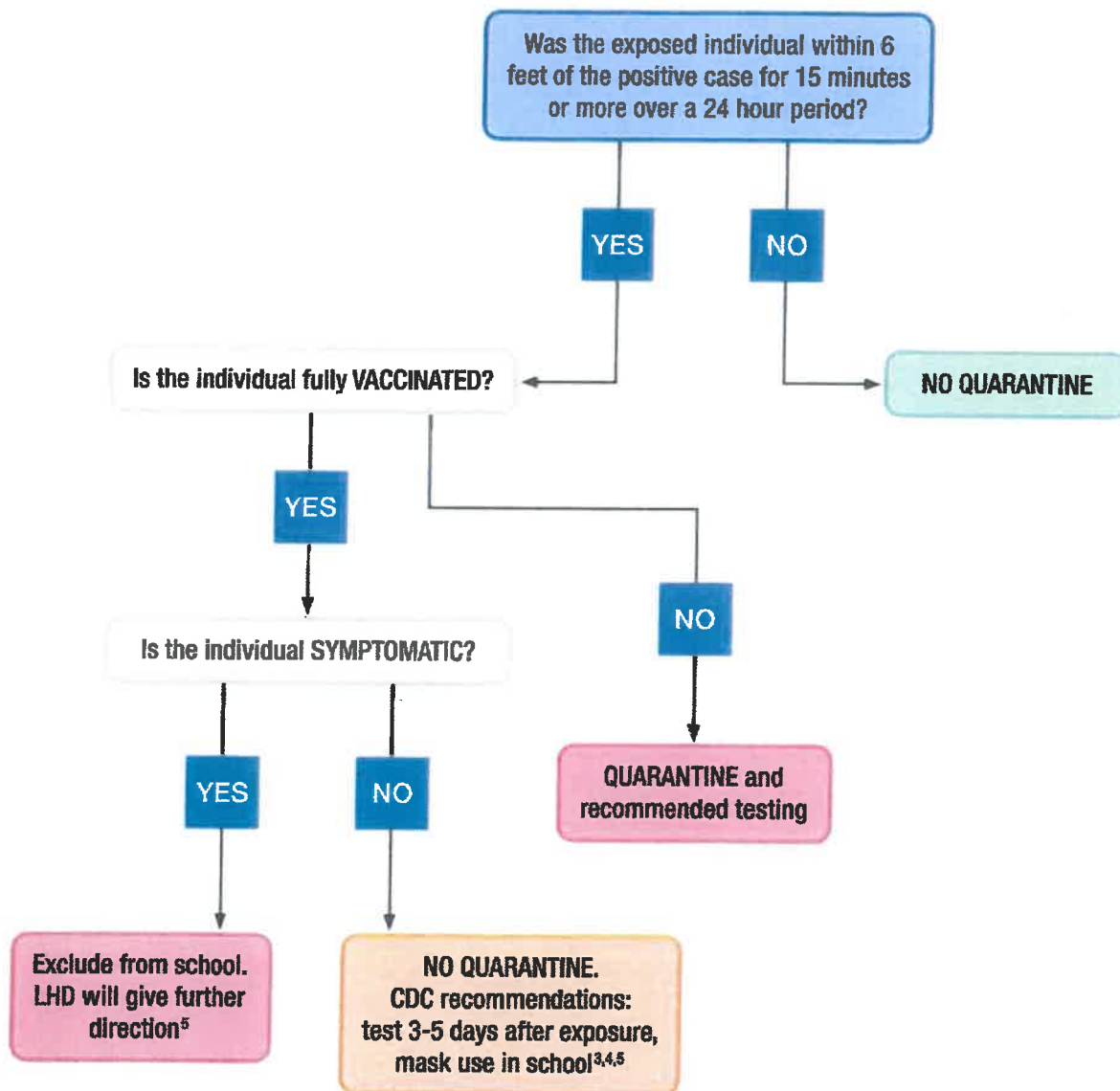


1. In general, this algorithm will be used to identify individuals who require isolation and/or quarantine/exclusion after a potential exposure. Ultimately, decisions will be made based on the LHD's review of all unique circumstances of the investigation.
 2. CDC consistent and correct mask use: [CLICK HERE](#)
 3. CDC guidance for testing fully vaccinated individuals after exposure: [CLICK HERE](#)
 4. At present, mask use in school is mandated in NYS per Regulation 10 nycrr 2.61
 5. Notify parent/guardian of students exposure and CDC recommendations
 * If and when CDC recommendations change this document will be updated

Adult Case/Student Contacts¹

Adult Case/Adult Contacts¹

Student Case/Adult Contacts¹



1. In general, this algorithm will be used to identify individuals who require isolation and/or quarantine/exclusion after a potential exposure. Ultimately, decisions will be made based on the LHD's review of all unique circumstances of the investigation.

2. CDC consistent and correct mask use: [CLICK HERE](#)

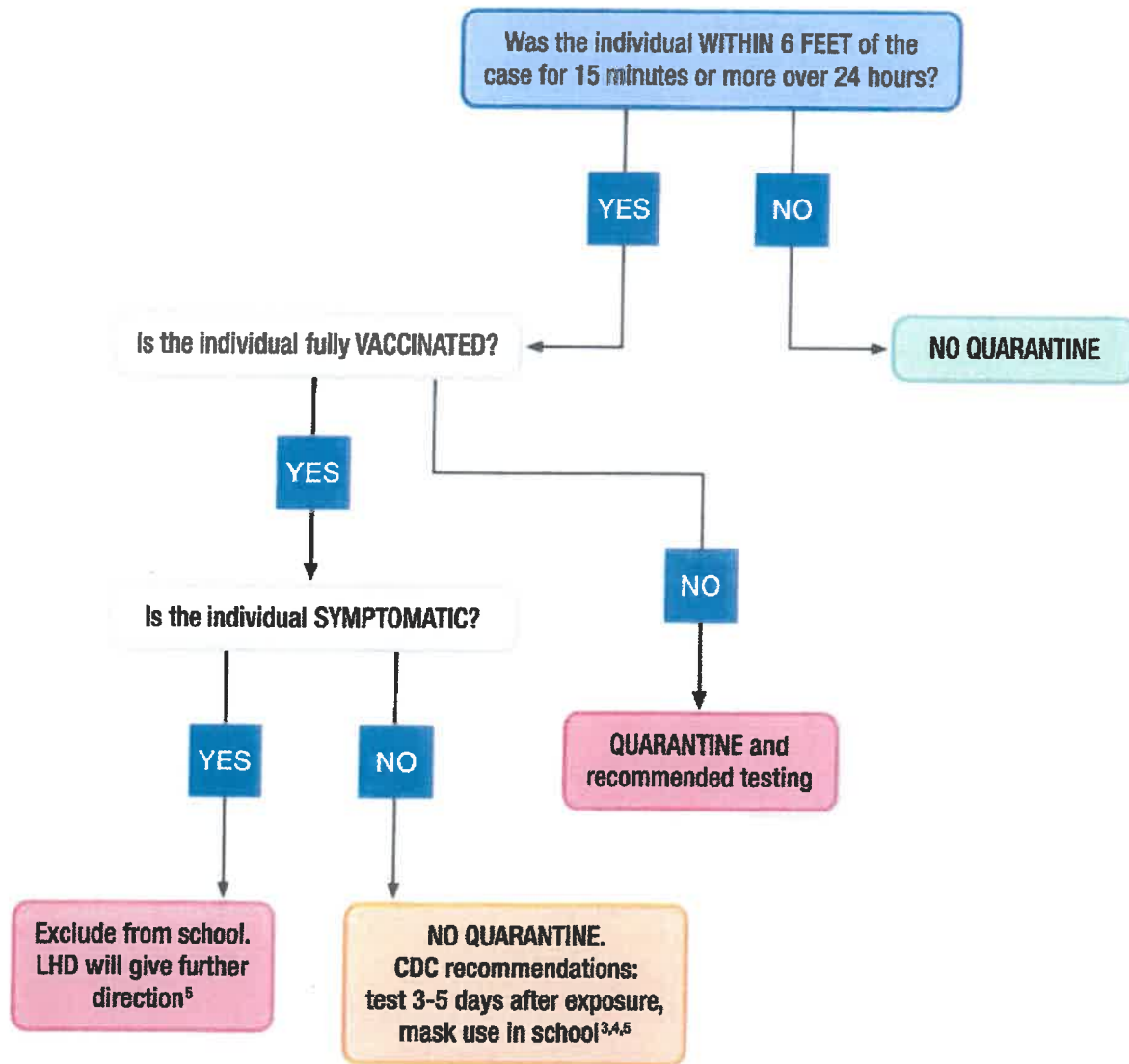
3. CDC guidance for testing fully vaccinated individuals after exposure: [CLICK HERE](#)

4. At present, mask use in school is mandated in NYS per Regulation 10 nycrr 2.61

5. Notify parent/guardian of students exposure and CDC recommendations

* If and when CDC recommendations change this document will be updated

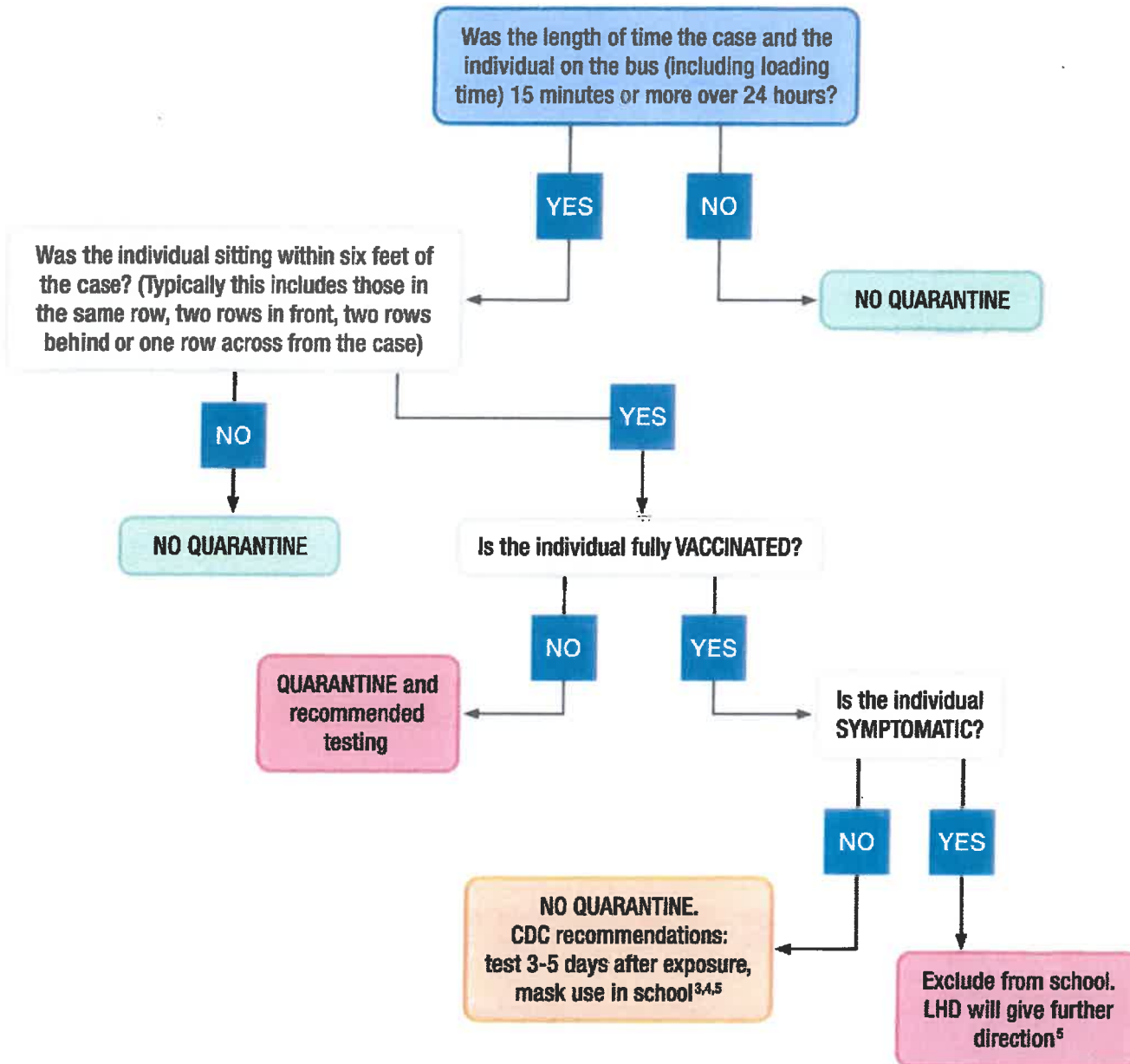
Lunchroom¹



1. In general, this algorithm will be used to identify individuals who require isolation and/or quarantine/exclusion after a potential exposure. Ultimately, decisions will be made based on the LHD's review of all unique circumstances of the investigation.
 2. CDC consistent and correct mask use: [CLICK HERE](#)
 3. CDC guidance for testing fully vaccinated individuals after exposure: [CLICK HERE](#)
 4. At present, mask use in school is mandated in NYS per Regulation 10 nycrr 2.61
 5. Notify parent/guardian of students exposure and CDC recommendations
 * If and when CDC recommendations change this document will be updated

Transportation¹

Requirements: Consistent and correct mask usage is required during the entire loading, transport, and disembarking process.
Recommendations: Windows open or at least cracked for the entire duration and assigned seats.



1. In general, this algorithm will be used to identify individuals who require isolation and/or quarantine/exclusion after a potential exposure. Ultimately, decisions will be made based on the LHD's review of all unique circumstances of the investigation.

2. CDC consistent and correct mask use: [CLICK HERE](#)

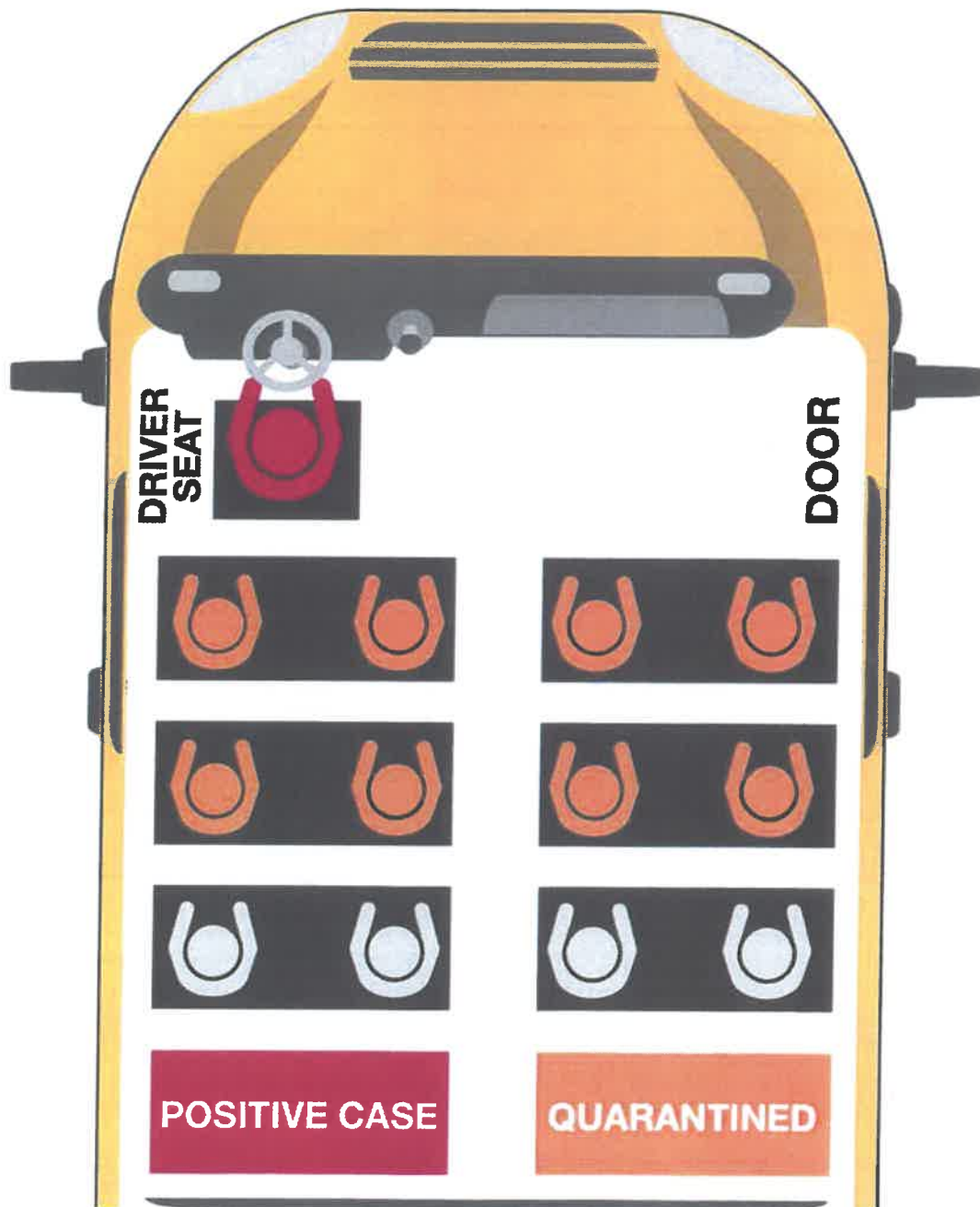
3. CDC guidance for testing fully vaccinated individuals after exposure: [CLICK HERE](#)

4. At present, mask use in school is mandated in NYS per Regulation 10 nycrr 2.61

5. Notify parent/guardian of students exposure and CDC recommendations

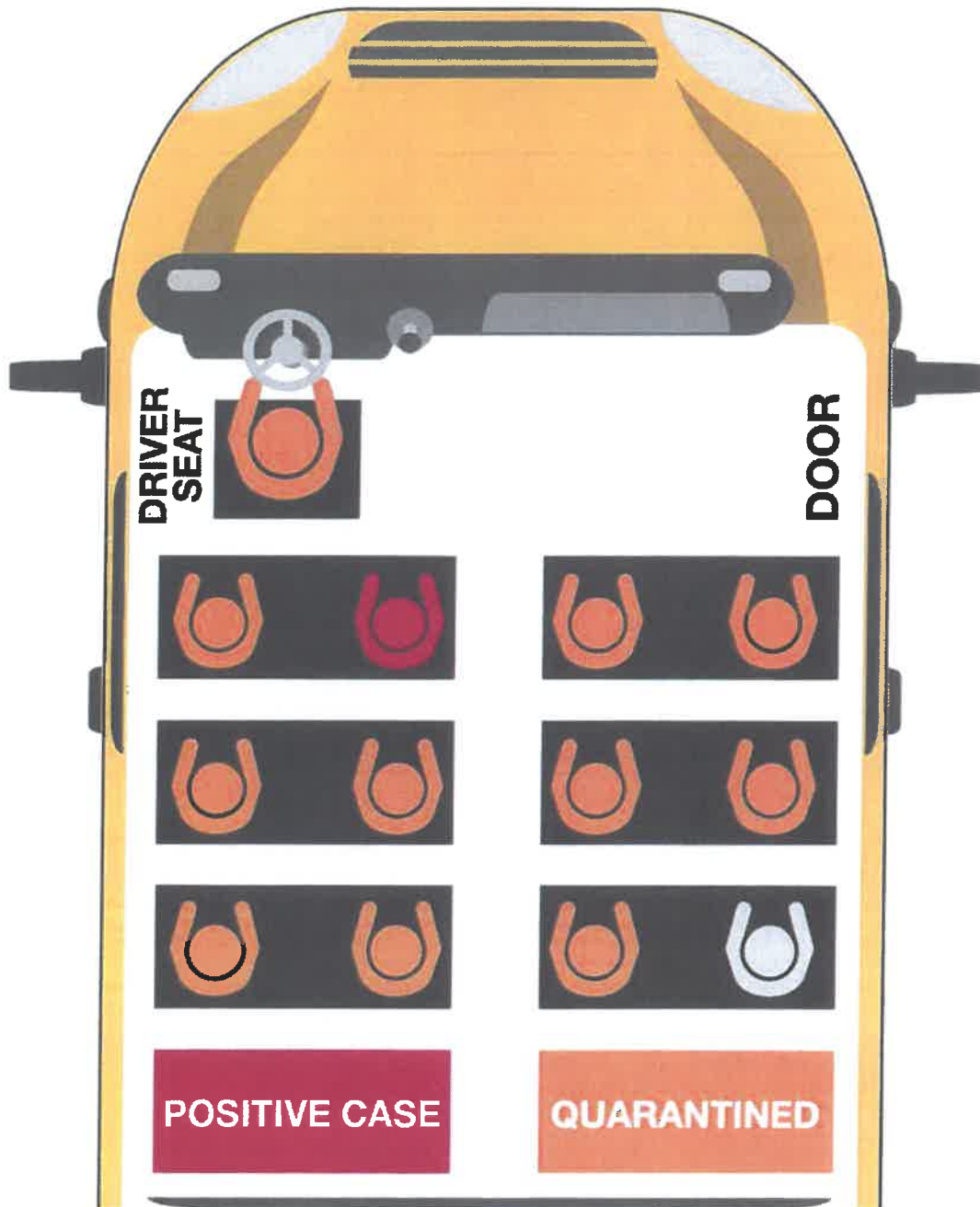
* If and when CDC recommendations change this document will be updated

Transportation Diagram: #A^{1,2}



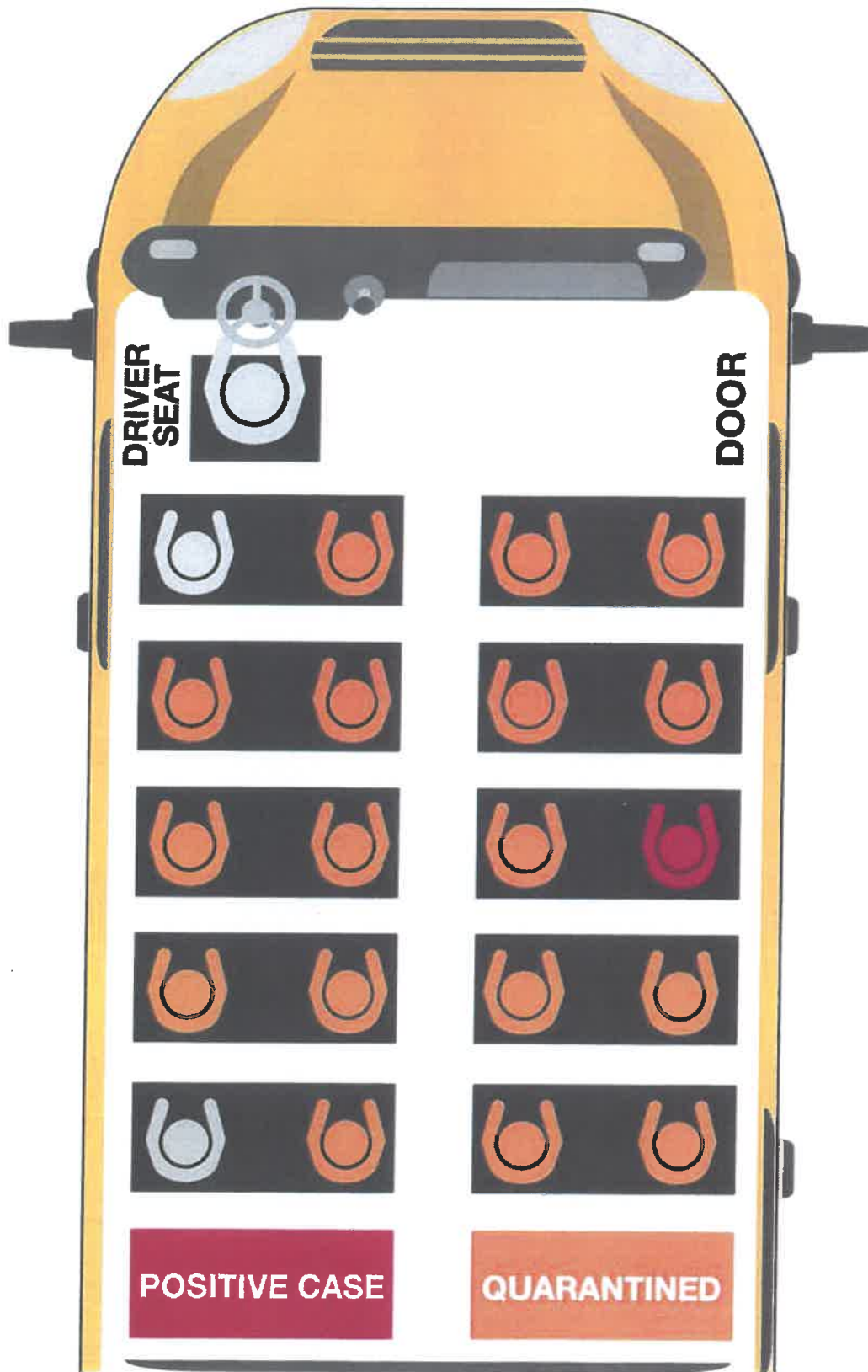
1. In general, this algorithm will be used to identify individuals who require isolation and/or quarantine/exclusion after a potential exposure. Ultimately, decisions will be made based on the LHD's review of all unique circumstances of the investigation.
2. Quarantine recommendations in the diagram may differ based on individual bus measurements.

Transportation Diagram: #B^{1,2}



1. In general, this algorithm will be used to identify individuals who require isolation and/or quarantine/exclusion after a potential exposure. Ultimately, decisions will be made based on the LHD's review of all unique circumstances of the investigation.
2. Quarantine recommendations in the diagram may differ based on individual bus measurements.

Transportation Diagram: #C^{1,2}



1. In general, this algorithm will be used to identify individuals who require isolation and/or quarantine/exclusion after a potential exposure. Ultimately, decisions will be made based on the LHD's review of all unique circumstances of the investigation.
2. Quarantine recommendations in the diagram may differ based on individual bus measurements.

Additional Resources

- Your Guide to Masks

<https://www.cdc.gov/coronavirus/2019-ncov/prevent-getting-sick/about-face-coverings.html>

- NYS Department of Health Commissioner's Determination on Indoor Masking

https://coronavirus.health.ny.gov/system/files/documents/2021/08/2.61_determination_0.pdf

- Emergency Regulations on Masking promulgated by the NYS Department of Health

https://regs.health.ny.gov/sites/default/files/pdf/emergency_regulations/Face%20Coverings%20for%20COVID%2019%20Prevention.pdf

- NYS Department of Health Commissioner's Determination on Testing

<https://coronavirus.health.ny.gov/system/files/documents/2021/09/2.62-determination.pdf>

- Emergency Regulations on Testing and Reporting Promulgated by the NYS Department of Health

https://regs.health.ny.gov/sites/default/files/pdf/emergency_regulations/COVID-19%20Reporting%20and%20Testing.pdf

- Centers for Disease Control Guidance for COVID-19 Prevention in K-12 Schools

<https://www.cdc.gov/coronavirus/2019-ncov/community/schools-childcare/k-12-guidance.html>

- Centers for Disease Control Interim Public Health Recommendations for Fully Vaccinated People

<https://www.cdc.gov/coronavirus/2019-ncov/vaccines/fully-vaccinated-guidance.html>

- Centers for Disease Control Appendices [https://www.cdc.gov/coronavirus/2019-](https://www.cdc.gov/coronavirus/2019-ncov/php/contact-tracing/contact-tracing-plan/appendix.html#contact)

[ncov/php/contact-tracing/contact-tracing-plan/appendix.html#contact](https://www.cdc.gov/coronavirus/2019-ncov/php/contact-tracing/contact-tracing-plan/appendix.html#contact)

- CDC Order for Masks on Buses

<https://www.cdc.gov/quarantine/masks/mask-travel-guidance.html>

- American Academy of Pediatrics COVID-19 Guidance for Safe Schools

<https://www.aap.org/en/pages/2019-novel-coronavirus-covid-19-infections/clinical-guidance/covid-19-planning-considerations-return-to-in-person-education-in-schools/>

- NYS Education Department Health and Safety Guide for the 2021-2022 School Year

<http://www.nysed.gov/back-school/health-and-safety-guide-2021-2022-school-year>

- Statement from New York State Department of Health Commissioner
<https://www.governor.ny.gov/news/statement-new-york-state-department-health-commissioner-dr-howard-zucker>
- NYS Department of Health Vaccination Tracker by Zip Code
<https://covid19vaccine.health.ny.gov/vaccination-rates-zip-code>
- NYS Department of Health Percent Positive Tracker
<https://forward.ny.gov/percentage-positive-results-county-dashboard>
- NYS Department of Health Progress on Combating COVID-19
<https://www.governor.ny.gov/news/governor-hochul-updates-new-yorkers-states-progress-combating-covid-19-1>
- Centers for Disease Control Community Transmission Rate
<https://covid.cdc.gov/covid-data-tracker/#county-view>